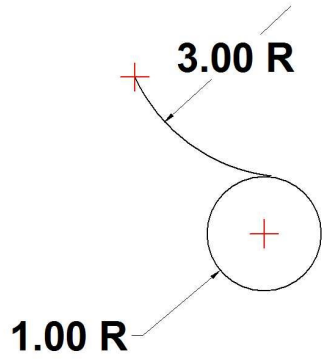
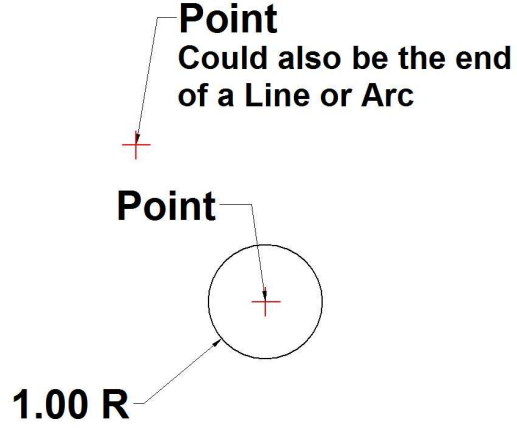


How to create a 3" radius arc starting from a point and ends tangent to a 1" radius circle



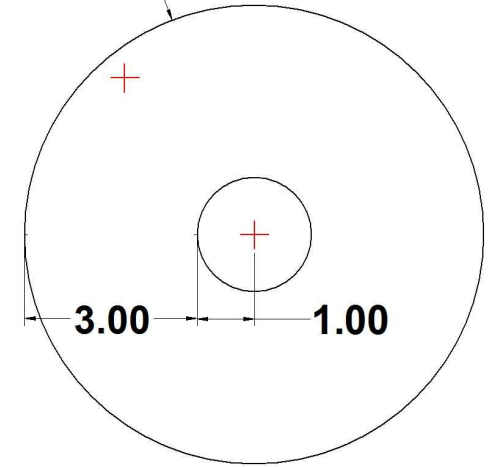
Create 2 points and 1.0 R Circle



1

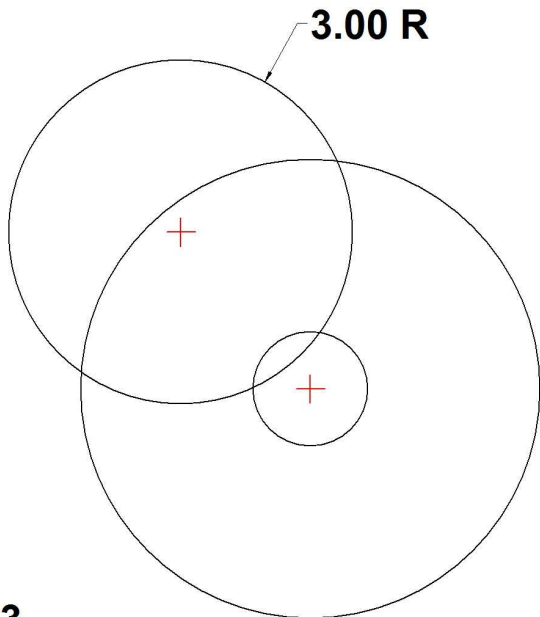
Create 4.0 R Circle centered around 1.0 R Circle

$3.00 + 1.00 = 4.00 R$



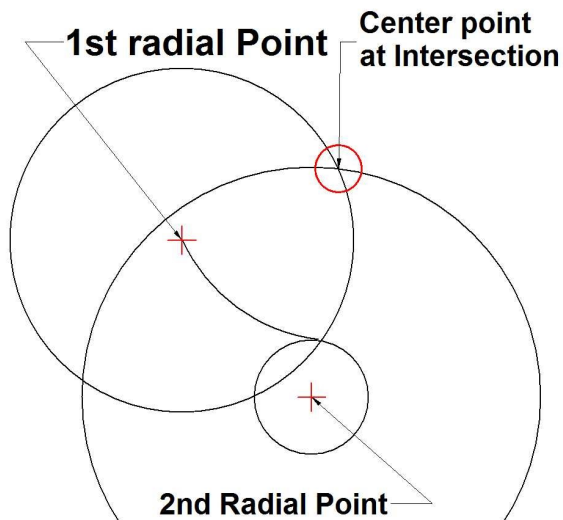
2

Create 3.00 R circle centered to point



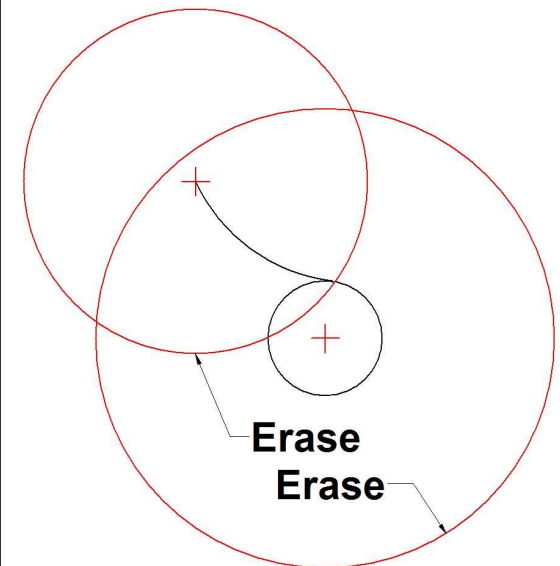
3

Use Draw a Circular Arc using the Center



4

Erase the 2 constuction circles



5